



Aspera Connect Browser Plugin Installation Instructions - Macintosh

Clinical Proteomic Tumor Analysis Consortium -
Data Coordinating Center (CPTAC-DCC)

9/4/2013

This document describes the steps to install Aspera Connect browser plugin in Macintosh computers.

Contents

Introduction 1

1. Installation 1

 1.1. Perform a fresh installation of Aspera Connect 1

 1.2. Post Installation..... 4

 1.3. Upgrade from a Previous Version..... 5

 1.4. Uninstall/Remove or modify Aspera Connect from your computer 5

2. Setting Preferences in the Aspera Connect Client 5

3. Getting Started..... 7

 3.1. Start a Transfer..... 7

 3.2. Manage Transfers..... 8

4. More Information 9

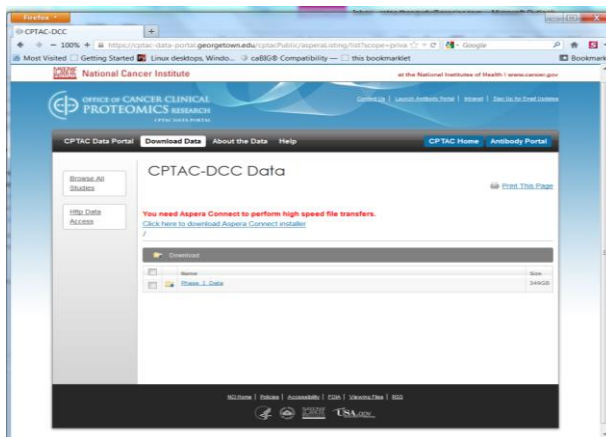
Introduction

Aspera Connect is a file transfer browser plugin that allows web applications to take advantage of **fasp™** fasp-enhanced high speed file transfers from the CPTAC data portal – <http://cptac-data-portal.esacinc.com>. The following section describes the installation procedure on a Macintosh system.

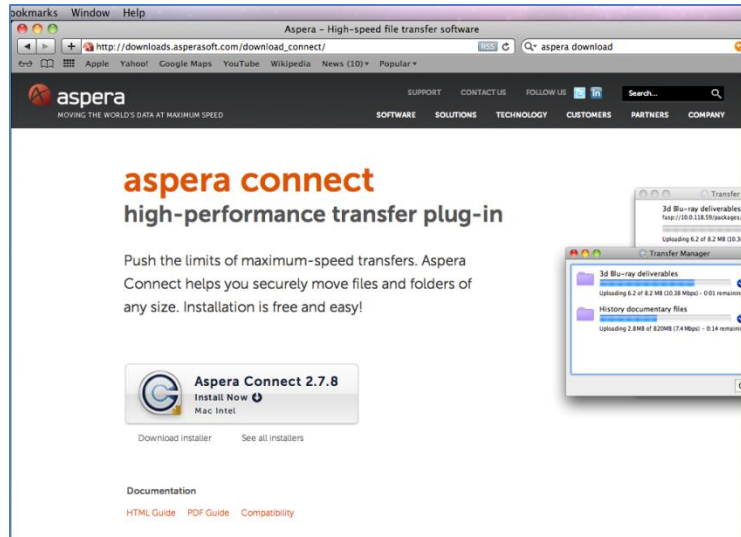
1. Installation

1.1. Perform a fresh installation of Aspera Connect

If you are installing Aspera Connect browser plugin for the first time you will see an alert “You need Aspera Connect to perform high speed file transfers” once you reach the CPTAC data portal download data page.



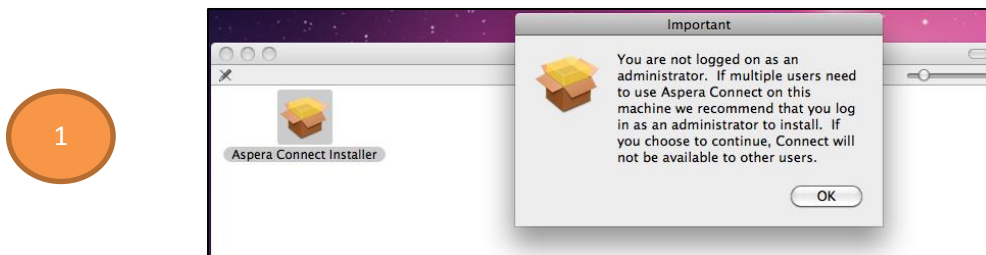
Clicking on the download Aspera Installer link will take you to Aspera website. The Aspera website will automatically suggest a compatible version of the installer based on your operation system. Once you click ‘Download Now’ button, depending on your operating system and browser, it will either launch the automatic installer or download the Aspera Connect DMG (Apple disk image) file which can be launched manually. You can also go directly to Aspera's website download page and choose the installer for your platform. Follow the on-screen instructions to complete the installation process.



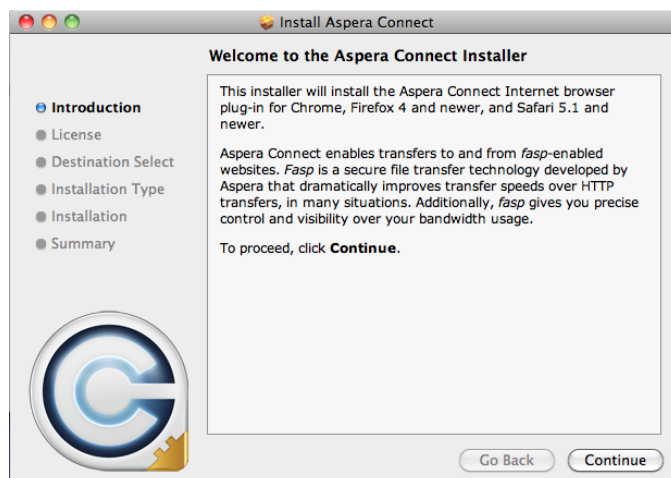
Important note:

- *For the Aspera Connect browser plugin auto-installer to work properly, Java must be installed on your system. If you do not have Java installed, or your system doesn't support it, then you can manually download and set up Connect per the instructions below. For Connect to function correctly, you must have cookies enabled within your browser. Please review your browser help for instructions on verifying this setting.*

Once you have downloaded the Aspera Connect browser plugin installer, run the installer on your machine either as an administrator to install for all users or just for the current user. You will also need to select accept the terms and conditions, as well as click the Agree button when prompted. Follow the on screen instructions to complete the installation process. Below are the sequential screen shots of the installation process for current user installation.



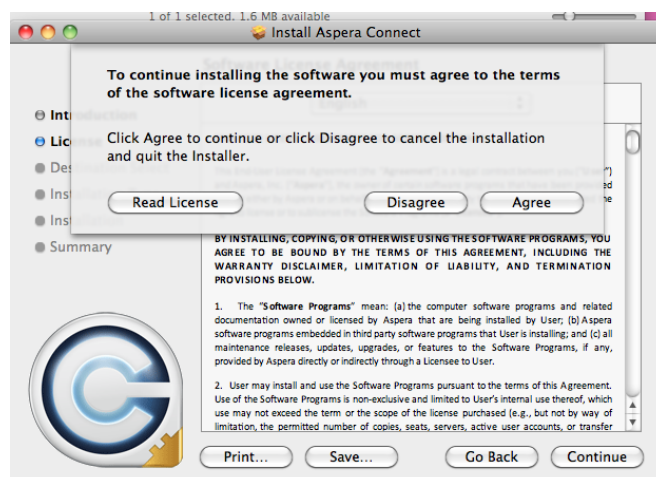
2



3



4



5



6



1.2. Post Installation

Once Aspera Connect has finished installing, you can access it in the following location: If Connect is installed for *all users*, the application will be installed in the following location:

Macintosh HD/Applications/Aspera Connect.app.

If Connect is installed for *the current user only*, the application will be installed in the following location:

Macintosh HD/Users/(Home Directory)/Library/Application Support/Aspera Connect.app

1.3. Upgrade from a Previous Version

Aspera Connect supports auto-upgrading, as well as installer upgrading. To update your existing installation of Aspera Connect to the latest version, go to <http://asperasoft.com/connect>, click the **Update Now** button and follow the onscreen instructions. Clicking the button will either initiate auto-upgrade or download the latest installer.

1.4. Uninstall/Remove or modify Aspera Connect from your computer

Important note: Before proceeding with uninstalling or modifying Aspera Connect, be sure to quit any open browsers.

To uninstall Aspera Connect, close both the Aspera Connect application and web browsers. When ready, find and delete *Aspera Connect.app* and *Aspera Web.plugin*. If Connect is installed for *all users*, the application and web-plugin files are located in the following directories:

Macintosh HD/Applications/Aspera Connect.app

Macintosh HD/Library/Internet Plug-Ins/Aspera Web.plugin

If Connect is installed for the *current user only*, the application and web-plugin files are located in the following directories:

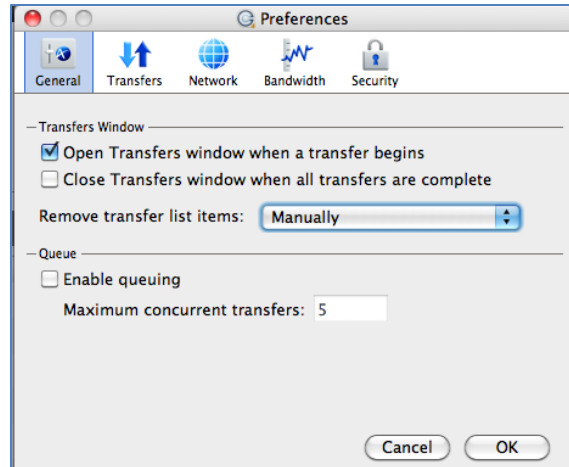
Macintosh HD/Users/(Home Directory)/Library/Application Support/Aspera Connect.app

Macintosh HD/Users/(Home Directory)/Library/Internet Plug-Ins/Aspera Web.plugin

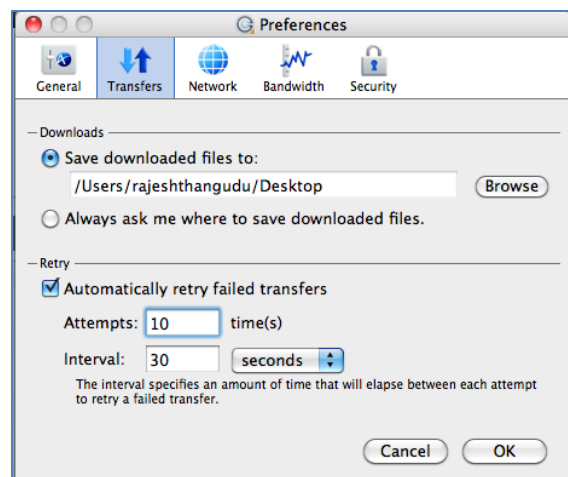
2. Setting Preferences in the Aspera Connect Client

To configure Aspera Connect, launch Aspera Connect (*Macintosh HD/Applications/Aspera Connect* or *Macintosh HD/Users/(Home directory)/Applications/Aspera Connect*), open **Preferences** (**Menu bar** > **Aspera Connect** > **Preferences**).

In the General tab you can indicate how you want to launch Aspera Connect and show the Transfer Manager window. We recommend that you select ‘open transfers window when a transfer begins’ as it serves as an alert that transfer has initiated.

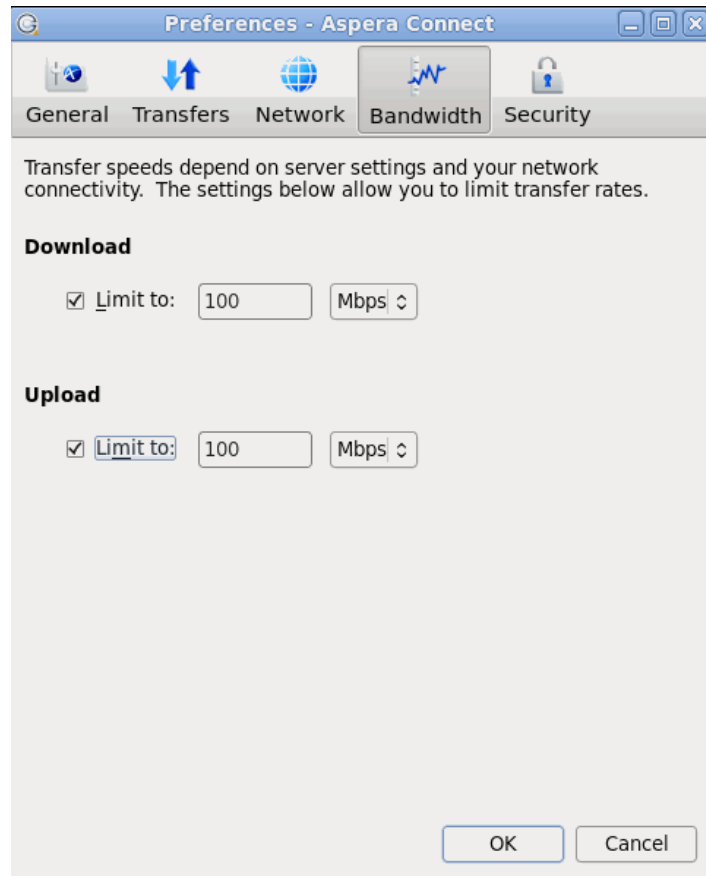


The Transfers tab contains the location of download folder and retry rule settings. If you want to enable the auto-retry function, check the Automatically retry failed transfers and enter values. This especially useful if your internet connection is unreliable or your transfers are frequently interrupted when you move out of wifi range. For example setting up higher number of attempts at longer intervals will automatically resume the failed downloads even after longer periods of loss of internet connectivity. We recommend that you set at least 10 attempts with 30 second interval so that short disruptions (up to 5 minutes) in your network connectivity would not hamper your downloads.



You can increase or limit Aspera Connect's transfer rates via the Bandwidth tab in the plugin preferences. You may change the download and/or upload transfer rates by enabling the respective checkboxes and inputting a rate in either Mbps or Kbps. Note that your ability to alter these rates depend on the following factors:

1. Your network's bandwidth. If your bandwidth doesn't allow you to reach these limits, then they will not be enforced.
2. Aspera transfer server settings. Settings on the host server may prohibit you from reaching transfer rates entered into these fields.



3. Getting Started

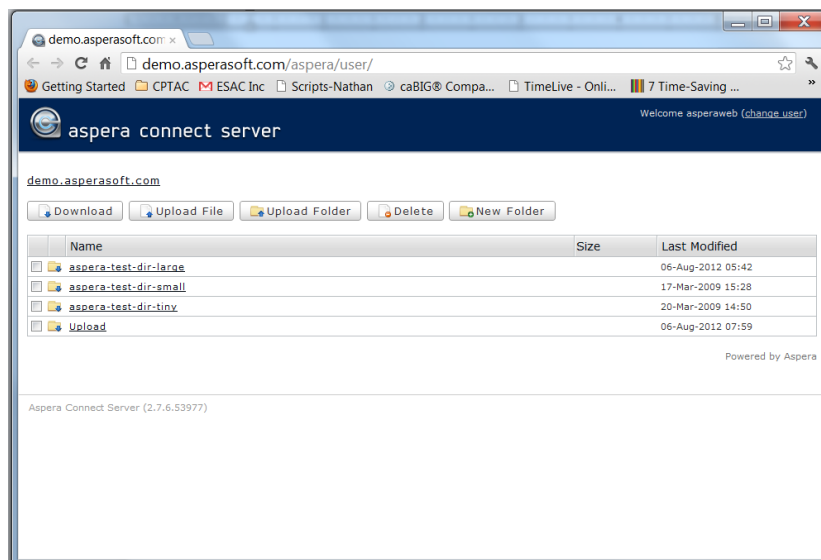
3.1. Start a Transfer

Once you have Aspera Connect browser plug-in installed and configured, first try a transfer between your computer and Aspera demo server. Open your browser and go to the following address: <http://demo.asperasoft.com/aspera/user/> and enter the following when prompted.

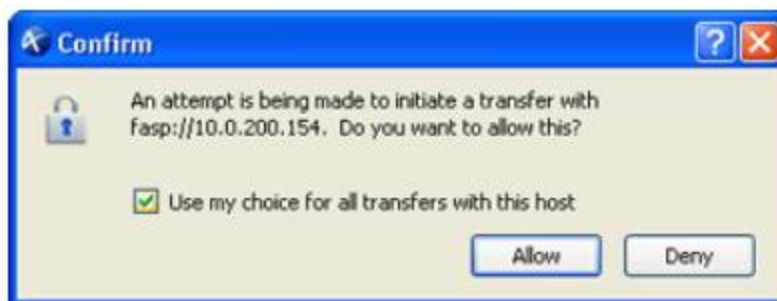
User: **asperaweb**

Password: **demoaspera**

We suggest you to start download of smaller files located in the folder aspera-test-dir-small to test the functionality of the Aspera Connect browser plugin. If the download is successful, also try to navigate to the folder aspera-test-dir-large and download some of the larger files to test the transfer speed.



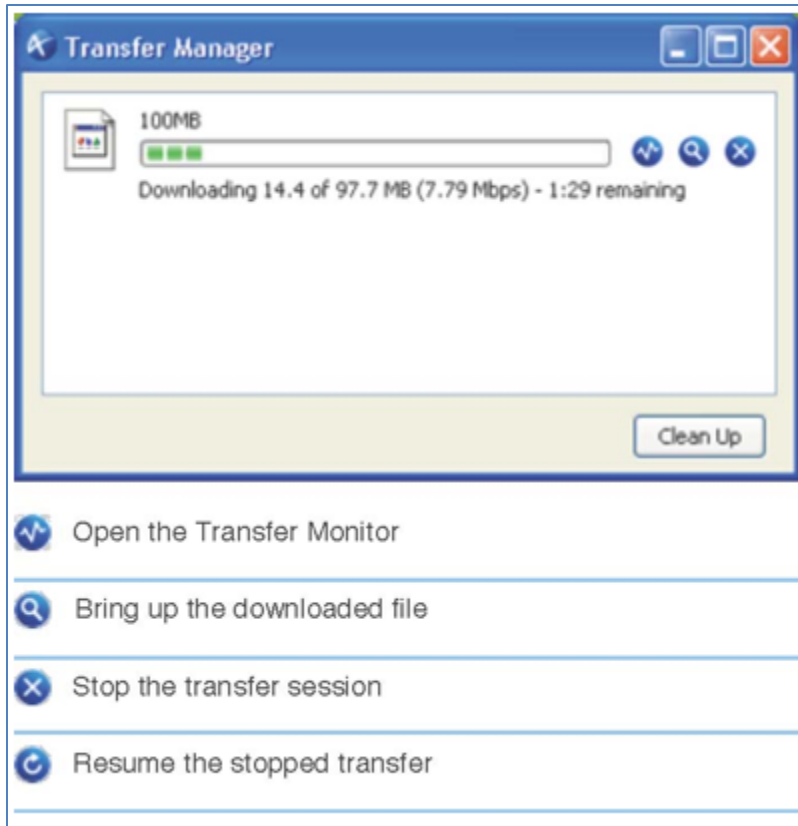
A dialog box will ask you if you want to allow the transfer to continue. Select Allow to confirm. If you check “Use my choice for all transfers with this host” this dialog box will not show up in the future.



If the test transfer works, you can now test transfer at CPTAC data portal.

3.2. Manage Transfers

You may view and manage all transfer sessions in the Transfer Manager. Double-click the Connect's icon in the system tray's task bar to open it.



4. More Information

This document serves as a quick start guide to install the Aspera connect client. For detailed instructions, including the complete details of compatible OS and browser versions, refer to the Aspera installation documentation at - http://downloads.asperasoft.com/download_connect/.